

SPHENISCUS ISSN 0326-7482	Bahía Blanca Argentina	Nº 8	pp. 27-28	Agosto de 1990
------------------------------	---------------------------	------	-----------	----------------

**A NEW SPECIES OF THE GENUS PHTHEIROPOIOS EICHLER 1939  
(PHTHIRAPTERA: AMBLYCERA: GYROPIDAE) PARASITIC ON CTENOMYS  
TUCUMANUS THOMAS 1900 (MAMMALIA: RODENTIA: CTENOMYIDAE)**

Una nueva especie del género *Phtheiropoios* Eichler 1939 (Phthiraptera: Amblycera: Gyropidae), parásita de *Ctenomys tucumanus* Thomas 1900 (Mammalia: Rodentia: Ctenomyidae).

Armando C. CICCHINO \*

Eight species are currently included in the genus *Phtheiropoios* Eichler 1939 (see Verneck 1948). Six of them are parasitic on hosts belonging to the genus *Ctenomys* -*Ph. ewingi* (Verneck 1936), *Ph. pollicaris* (Ewing 1924), *Ph. latipollicaris* (Ewing 1924), *Ph. forficulatus* (Neumann 1912), *Ph. wetmorei* (Ewing 1924)-, one on Abrocomidae -*Ph. pearsoni* Verneck 1948-, and one on Chinchillidae -*Ph. lagotis* (Gervais 1849).

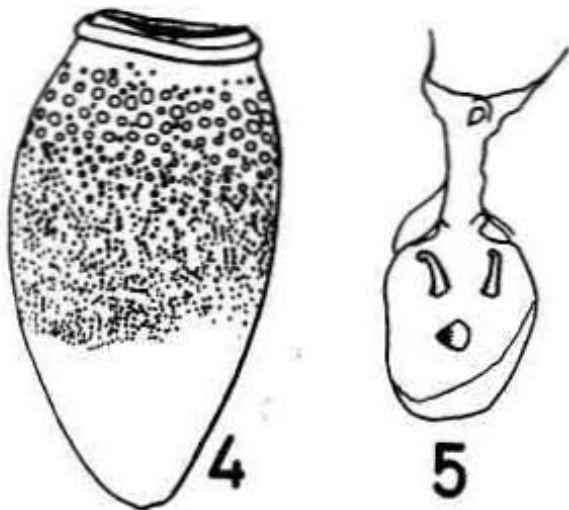
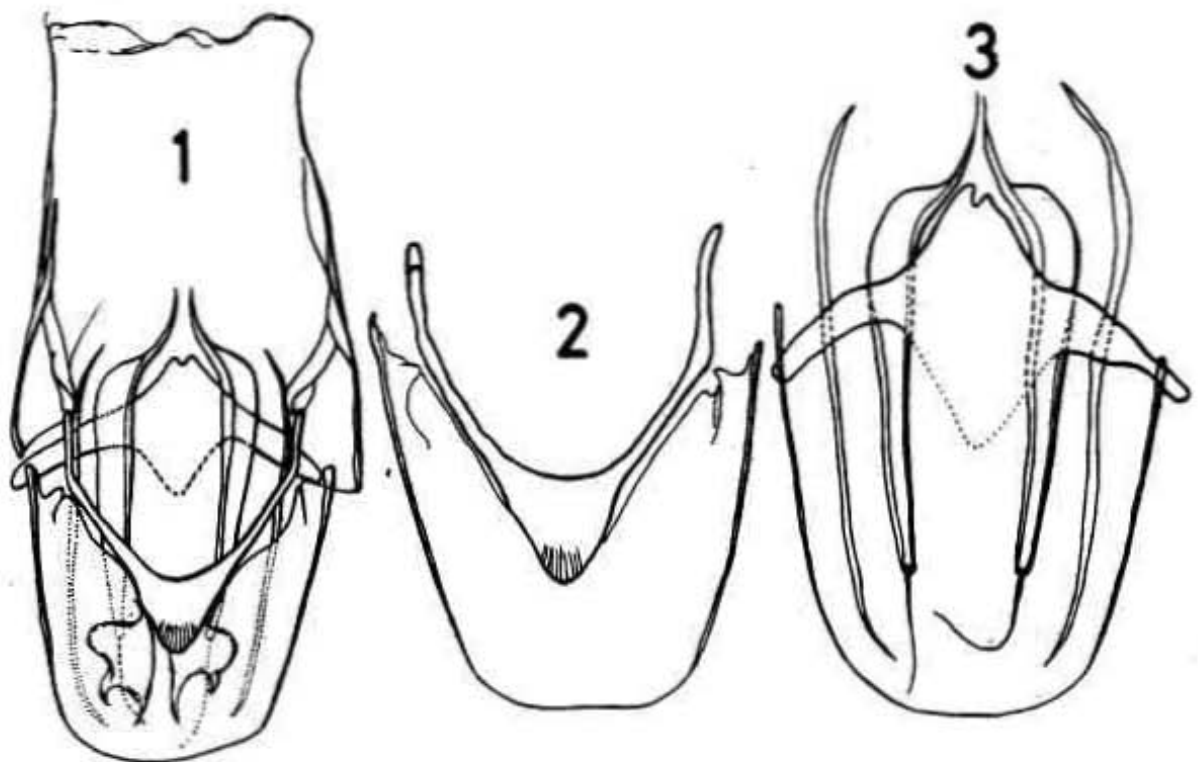
This paper deals with a new species parasitic on *Ctenomys tucumanus* Thomas 1900 from Tucumán province, Argentina. Two species were previously recorded from this province: *Ph. wetmorei* (Ewing 1924) ex *Ctenomys latro* Thomas 1918 and *Ctenomys* sp., and *Ph. forficulatus* (Neumann 1912) ex *Ct. latro* Thomas 1918.

***Phtheiropoios tucumanus*, new species**

**Male:** general habitus reminiscent of *Ph. wetmorei*, but having two definite rows of setae essentially similar in each abdominal segment, and a tendency to have a slender silhouette. Genitalia very distinctive: basal plate gradually enlarged caudad (fig. 1), pseudopenis "V" shaped (fig. 2), and long parameres and ventral sclerite as shown in figure 3; a sclerotized band runs near each paramere.

**Female:** much as for *Ph. wetmorei*, except for having two definite rows of subequal setae in each abdominal segment, and a noticeably slender silhouette.

**Egg:** amphora (fig. 4) with a strong and different sized reticulation, measuring 688-701 x 367-384 µm.



**Remarks:** the "V" shaped pseudopenis and the peculiar shape of the basal plate readily distinguish this new species from the remaining ones included in *Phtheiropoios*.

**Type host:** *Ctenomys tucumanus* Thomas 1900.

**Specimens examined:** Male holotype and three females paratypes, near San Miguel de Tucumán, Tucumán province, Argentina, 31-X-1967. All them in collection of Museo de La Plata, number 1128.

All eggs examined lack the operculum.

**Hatching organ of the embryo:** it is composed of a thin and lightly sclerotized and bottle-shaped plate bearing a strong medial tooth and two lateral horn-like processes (fig. 5).

#### REFERENCE CITED

WERNECK, F.L., 1948. Os malófagos de mamíferos. Parte I: Amblycera e Ischnocera (Phloptoridae e parte de Trichodectidae) e Rhynchophthirina. Rio de Janeiro, 243 pp.